

Disc Scalpers Belt or Chain Drive



The Acrowood Disc Scalper is designed to remove gross oversize pieces which could cause material handling problems in or damage to downstream equipment. The heavy duty scalper base is fabricated from wide flange I-beam with 4" steel pipe for cross ties. The hopper walls are mounted to the base in segments to allow for simple shaft changes. Shaft rotation is monitored by a motion sensor.

Shaft assemblies are made from 4" square mechanical tubing fitted with stub shafts at each end. Discs and spacers are slipped over the tubing and held in place with spring washers and locknuts. The stub shafts are supported by spherical roller pillow block bearings mounted outboard of the hopper walls, away from potential contamination. The discs are typically cut from AR plate, 15" diameter and 3/8" thick.

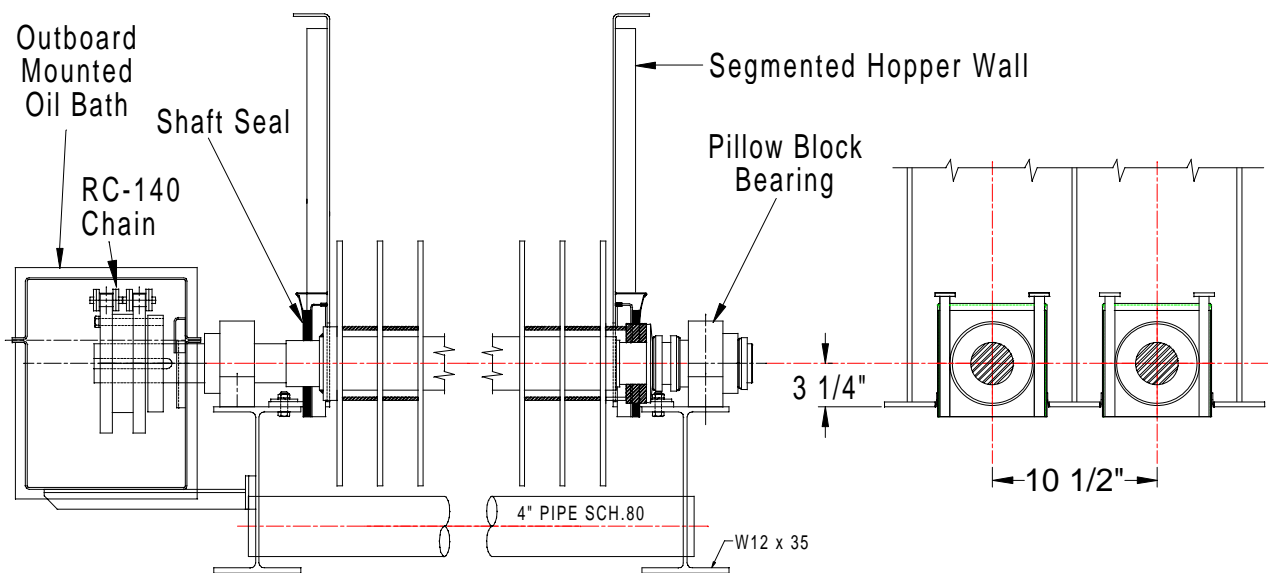
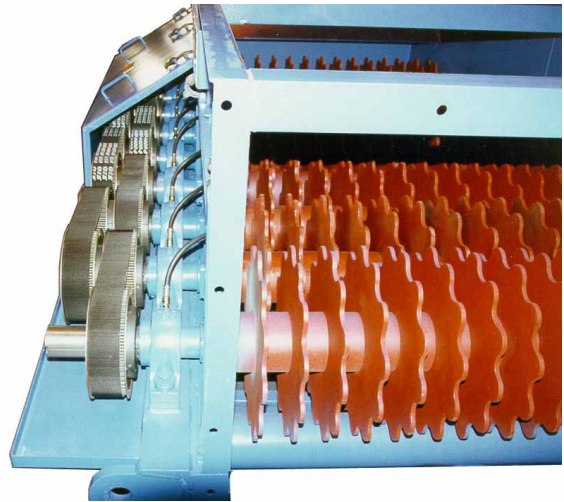
ACROWOOD
CORPORATION

Disc Scalpers

Belt or Chain Drive

The drive system is fully enclosed, protected from potential contamination. The bearings are easily accessed from either side of the screen, allowing simple lubrication access.

Acrowood disc scalpers are available with either an enclosed belt drive or RC-140 chain drive and sealed oil bath.



ACROWOOD
CORPORATION

P.O. Box 1028
Everett, WA 98206

Phone: (425) 258-3555
Fax: (425) 252-7622
www.acrowood.com