



**Dual Drive
Suspended Rotary Screen**



ACROWOOD

Excellence in Chip Processing



SUSPEND

A superior design for exceptional chip separation

The Dual Drive Suspended Rotary Screen is designed for high screening capacity. The screen's twin outboard mounted drives avoid placing any drive components in the chip flow.

Four counterweights are provided, two above and two below the screen decks, on either side of the screen frame. The counterweight shafts are each supported by a pair of SKF spherical double-row bearings mounted in steel pillow blocks. Bearings, drive shafts, and

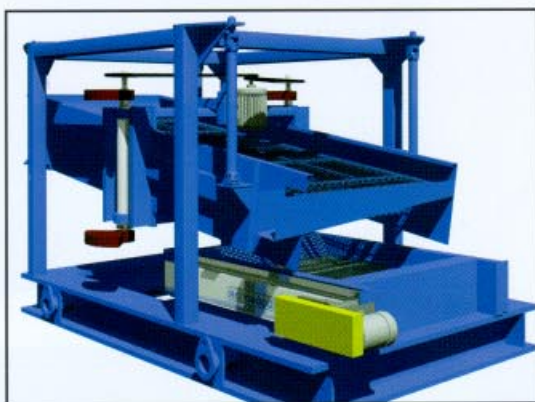
counterweights are all located for easy maintenance access.

Simply removing the guards and unbolting the pillow blocks can remove the entire counterweight assembly for service. The counterweight shafts are driven and synchronized by Gates "Poly Chain" timing belts driven from a centrally mounted electric motor. Motor and belts can be mounted on either the top or the bottom of the screen.

The screen frame is unitized, heavy

sheet steel construction, with rectangular tubing reinforcement. Dual Drive screens are supported by four large universal joint assemblies with needle bearings and can be suspended from a support frame or building structure.

Alone, or combined with the DiamondRoll Screen, Acrowood's Dual Drive Suspended Rotary Screens are unbeatable.



Combining the Diamond Roll and Dual Drive screens provides excellent wet and cold weather performance.

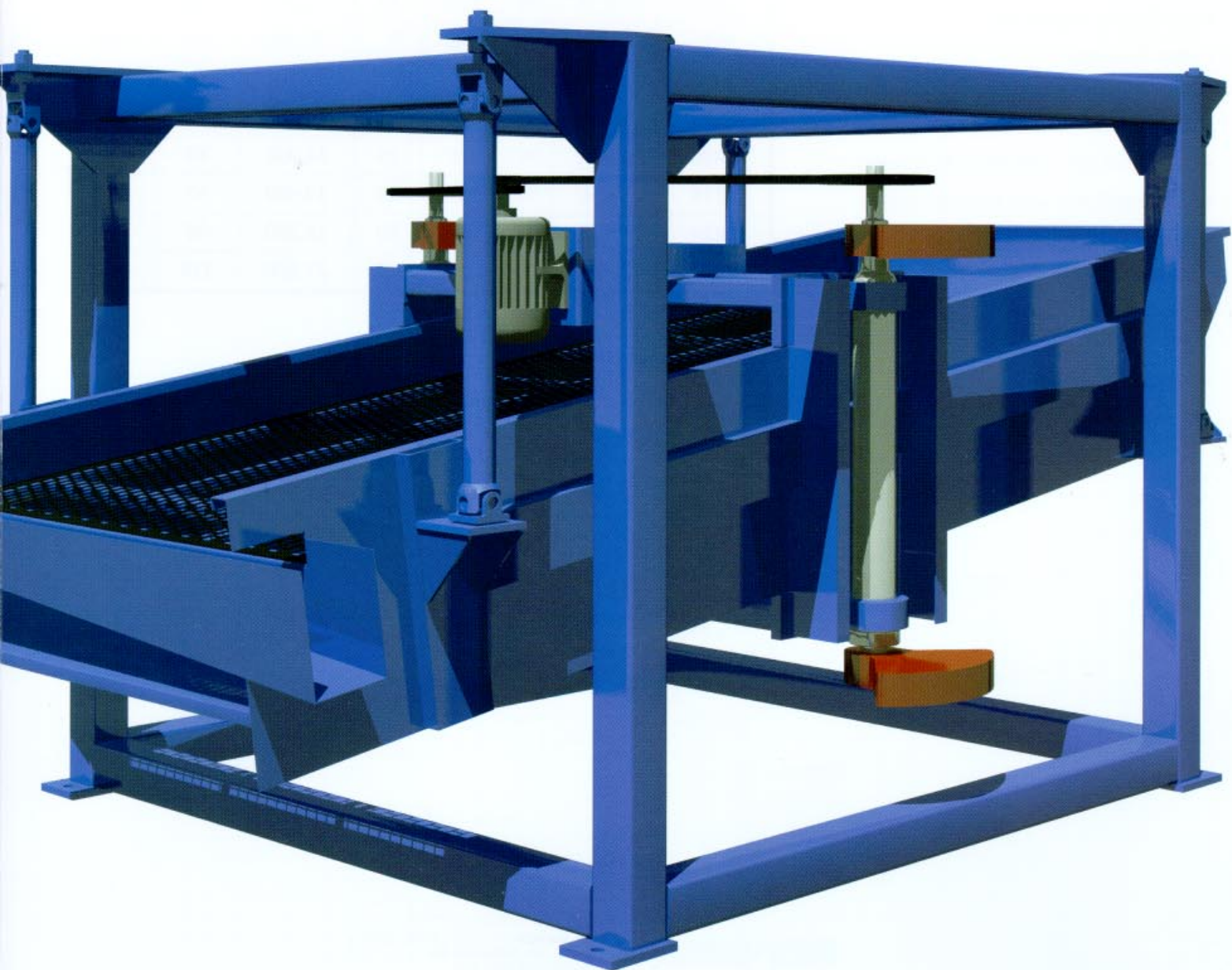
Acrowood's Dual Drive Suspended Rotary Screens efficiently screen fiber and are easily maintained. And, when combined with Acrowood's patented DiamondRoll Fines Screen, no better screening method can be found.

When used with the DiamondRoll, the Dual Drive Suspended Screen sorts out overs for rechipping and sends large accepts on for further processing. Small accepts, pins and fines are sent together to the DiamondRoll Screen, which uses textured roll surfaces to achieve highly accurate and efficient separation of the fines, while saving all usable fiber.

This combination screening method is particularly effective in cold winter conditions, where high levels of pins can be difficult to process, and where icy fiber tends to blind the screens. The Dual Drive/DiamondRoll handles these conditions with ease.



ED ROTARY SCREEN



Specifications: Dual Drive Suspended Screens

Capacities and dimensions based on standard two deck, three sort screens.

Dimensions are approximate. Use only Acrowood certified drawings for installation.

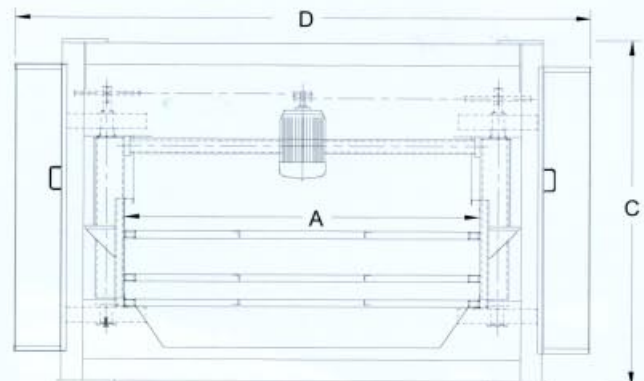
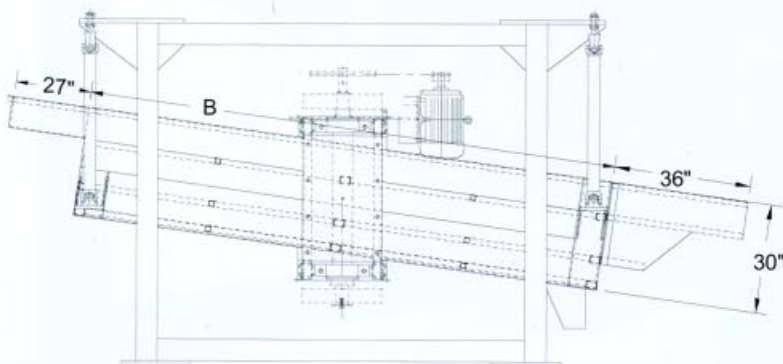
Screen capacity will vary with infeed chip quality and desired separation points.

Discharge chute dimensions are for standard, full-width accepts and overs discharges.

In addition to Dual Drive Suspended Screens, Acrowood Offers:

- Air Density Separators
- Chip Crackers
- Chip Slicers
- DiamondRoll™ VIRO Chip Thickness Screens
- DiamondRoll™ VIRO Particle Screens
- DiamondRoll™ VIRO Fines Screens
- Disc Scalpers
- Raised-Roll Disc Thickness Screens
- Rechippers
- Slant Disc Chippers
- Whole Log Chippers
- Drywood II Moisture Measurement Systems

Model #	Dimensions					Capacity	
	A x B	C	D	HP	Weight	UPH	M ³ /hr
580	5' x 8'	87"	121"	3	6,800 lb	16	91
612	6' x 12'	96"	135"	5	8,900	29	163
614	6' x 14'	96"	135"	5	9,300	34	190
618	6' x 18'	96"	135"	7	11,000	43	245
812	8' x 12'	96"	159"	7	10,000	38	217
814	8' x 14'	96"	159"	7	11,600	45	254
818	8' x 18'	96"	159"	10	12,400	58	326
1012	10'x12'	96"	182"	7	10,400	48	272
1014	10'x14'	96"	182"	7	11,600	56	317
1018	10'x18'	96"	182"	10	13,800	72	408
1020	10'x20'	96"	182"	10	14,900	80	453
1214	12'x14'	96"	210"	10	13,900	67	381
1220	12'x20'	96"	210"	10	18,200	96	544
1224	12'x24'	96"	210"	15	21,100	115	652



ACROWOOD
CORPORATION
Excellence in Chip Processing

P.O. Box 1028
Everett, WA 98206-1028 USA

Phone: (425) 258 - 3555
Fax: (425) 252-7622
Web Site: www.acrowood.com
E-mail: sales@acrowood.com